



Best Practices for Consideration of Residuals and Impurities in the HPD Open Standard 2.3 update

Health Product Declaration Collaborative

July 2023, version 2.3 update



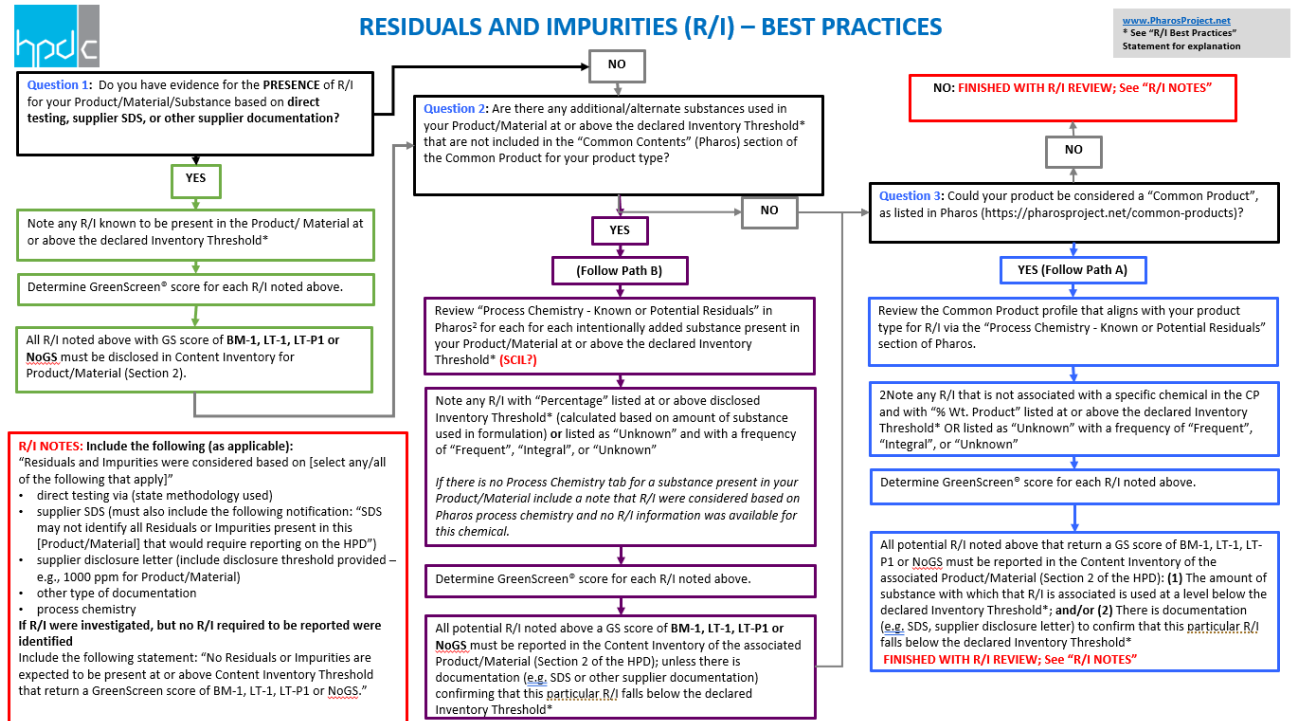
Step by Step Process

Follow this process, step by step as illustrated in this document

QUESTION 1: Do you have evidence for the **PRESENCE** of R/I for your Product/Material based on direct testing, supplier SDS, or other supplier documentation?

QUESTION 2: Are there any additional/alternate substances used in your Product/Material at or above the declared Inventory Threshold* that are not included in the “Common Contents” (Pharos) section of the Common Product for your product type?

QUESTION 3: Is your type of product included in the “Common Product” list in Pharos (https://pharosproject.net/common-products)?





RESIDUALS AND IMPURITIES (R/I) – BEST PRACTICES

Question 1: Do you have evidence for the **PRESENCE** of R/I for your Product/Material/Substance based on **direct testing, supplier SDS, or other supplier documentation?**



RESIDUALS AND IMPURITIES (R/I) – BEST PRACTICES

Question 1: Do you have evidence for the **PRESENCE** of R/I for your Product/Material/Substance based on **direct testing, supplier SDS, or other supplier documentation?**

YES

Note any R/I known to be present in the Product/ Material at or above the declared Inventory Threshold*

Determine GreenScreen® score for each R/I noted above.

All R/I noted above with GS score of **BM-1, LT-1, LT-P1** or **NoGS** must be disclosed in Content Inventory for Product/Material (Section 2).



RESIDUALS AND IMPURITIES (R/I) – BEST PRACTICES

Question 1: Do you have evidence for the **PRESENCE** of R/I for your Product/Material/Substance based on **direct testing, supplier SDS, or other supplier documentation?**

YES

Note any R/I known to be present in the Product/ Material at or above the declared Inventory Threshold*

Determine GreenScreen® score for each R/I noted above.

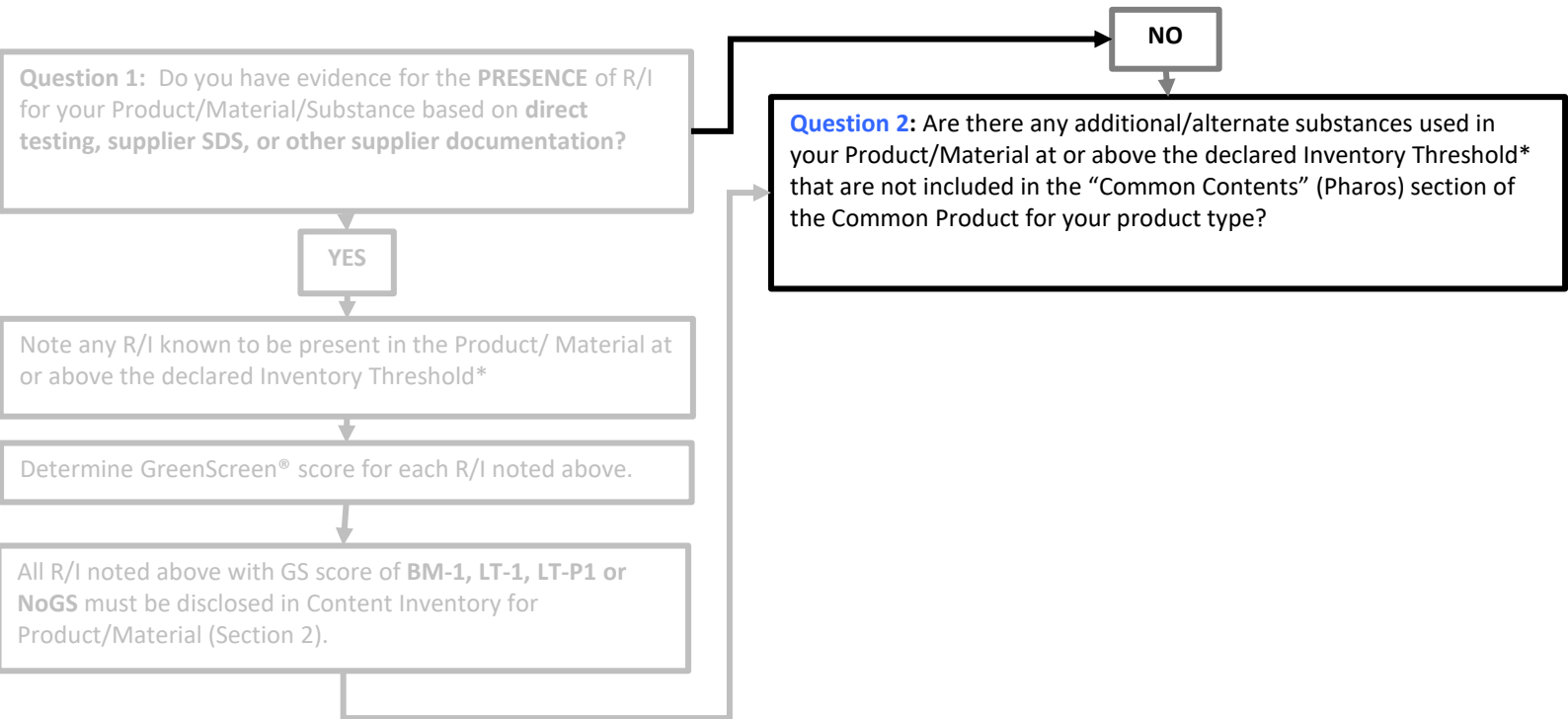
All R/I noted above with GS score of **BM-1, LT-1, LT-P1 or NoGS** must be disclosed in Content Inventory for Product/Material (Section 2).

Question 2: Are there any additional/alternate substances used in your Product/Material at or above the declared Inventory Threshold* that are not included in the “Common Contents” (Pharos) section of the Common Product for your product type?



RESIDUALS AND IMPURITIES (R/I) – BEST PRACTICES

1 www.QuartzProject.org
2 www.PharosProject.net
* See “R/I Best Practices”
Statement for explanation





RESIDUALS AND IMPURITIES (R/I) – BEST PRACTICES

Question 1: Do you have evidence for the **PRESENCE** of R/I for your Product/Material/Substance based on **direct testing, supplier SDS, or other supplier documentation**?

YES

Note any R/I known to be present in the Product/ Material at or above the declared Inventory Threshold*

Determine GreenScreen® score for each R/I noted above.

All R/I noted above with GS score of **BM-1, LT-1, LT-P1 or NoGS** must be disclosed in Content Inventory for Product/Material (Section 2).

NO

Question 2: Are there any additional/alternate substances used in your Product/Material at or above the declared Inventory Threshold* that are not included in the “Common Contents” (Pharos) section of the Common Product for your product type?

YES

(Follow Path B)

Review “Process Chemistry - Known or Potential Residuals” in Pharos² for each for each intentionally added substance present in your Product/Material at or above the declared Inventory Threshold* **(SCIL?)**

Note any R/I with “Percentage” listed at or above disclosed Inventory Threshold* (calculated based on amount of substance used in formulation) or listed as “Unknown” and with a frequency of “Frequent”, “Integral”, or “Unknown”

If there is no Process Chemistry tab for a substance present in your Product/Material include a note that R/I were considered based on Pharos process chemistry and no R/I information was available for this chemical.

Determine GreenScreen® score for each R/I noted above.

All potential R/I noted above a GS score of **BM-1, LT-1, LT-P1 or NoGS** must be reported in the Content Inventory of the associated Product/Material (Section 2 of the HPD); unless there is documentation (e.g. SDS or other supplier documentation) confirming that this particular R/I falls below the declared Inventory Threshold*



RESIDUALS AND IMPURITIES (R/I) – BEST PRACTICES

Question 1: Do you have evidence for the **PRESENCE** of R/I for your Product/Material/Substance based on **direct testing, supplier SDS, or other supplier documentation**?

YES

Note any R/I known to be present in the Product/ Material at or above the declared Inventory Threshold*

Determine GreenScreen® score for each R/I noted above.

All R/I noted above with GS score of **BM-1, LT-1, LT-P1 or NoGS** must be disclosed in Content Inventory for Product/Material (Section 2).

NO

Question 2: Are there any additional/alternate substances used in your Product/Material at or above the declared Inventory Threshold* that are not included in the “Common Contents” (Pharos) section of the Common Product for your product type?

YES

(Follow Path B)

Review “Process Chemistry - Known or Potential Residuals” in Pharos² for each for each intentionally added substance present in your Product/Material at or above the declared Inventory Threshold* (**SCIL?**)

Note any R/I with “Percentage” listed at or above disclosed Inventory Threshold* (calculated based on amount of substance used in formulation) or listed as “Unknown” and with a frequency of “Frequent”, “Integral”, or “Unknown”

If there is no Process Chemistry tab for a substance present in your Product/Material include a note that R/I were considered based on Pharos process chemistry and no R/I information was available for this chemical.

Determine GreenScreen® score for each R/I noted above.

All potential R/I noted above a GS score of **BM-1, LT-1, LT-P1 or NoGS** must be reported in the Content Inventory of the associated Product/Material (Section 2 of the HPD); unless there is documentation (e.g. SDS or other supplier documentation) confirming that this particular R/I falls below the declared Inventory Threshold*

Question 3: Could your product be considered a “Common Product”, as listed in Pharos (<https://pharosproject.net/common-products>)?



RESIDUALS AND IMPURITIES (R/I) – BEST PRACTICES

Question 1: Do you have evidence for the **PRESENCE** of R/I for your Product/Material/Substance based on **direct testing, supplier SDS, or other supplier documentation**?

YES

Note any R/I known to be present in the Product/ Material at or above the declared Inventory Threshold*

Determine GreenScreen® score for each R/I noted above.

All R/I noted above with GS score of **BM-1, LT-1, LT-P1 or NoGS** must be disclosed in Content Inventory for Product/Material (Section 2).

NO

Question 2: Are there any additional/alternate substances used in your Product/Material at or above the declared Inventory Threshold* that are not included in the “Common Contents” (Pharos) section of the Common Product for your product type?

YES

(Follow Path B)

Review “Process Chemistry - Known or Potential Residuals” in Pharos² for each for each intentionally added substance present in your Product/Material at or above the declared Inventory Threshold* (**SCIL?**)

Note any R/I with “Percentage” listed at or above disclosed Inventory Threshold* (calculated based on amount of substance used in formulation) or listed as “Unknown” and with a frequency of “Frequent”, “Integral”, or “Unknown”

If there is no Process Chemistry tab for a substance present in your Product/Material include a note that R/I were considered based on Pharos process chemistry and no R/I information was available for this chemical.

Determine GreenScreen® score for each R/I noted above.

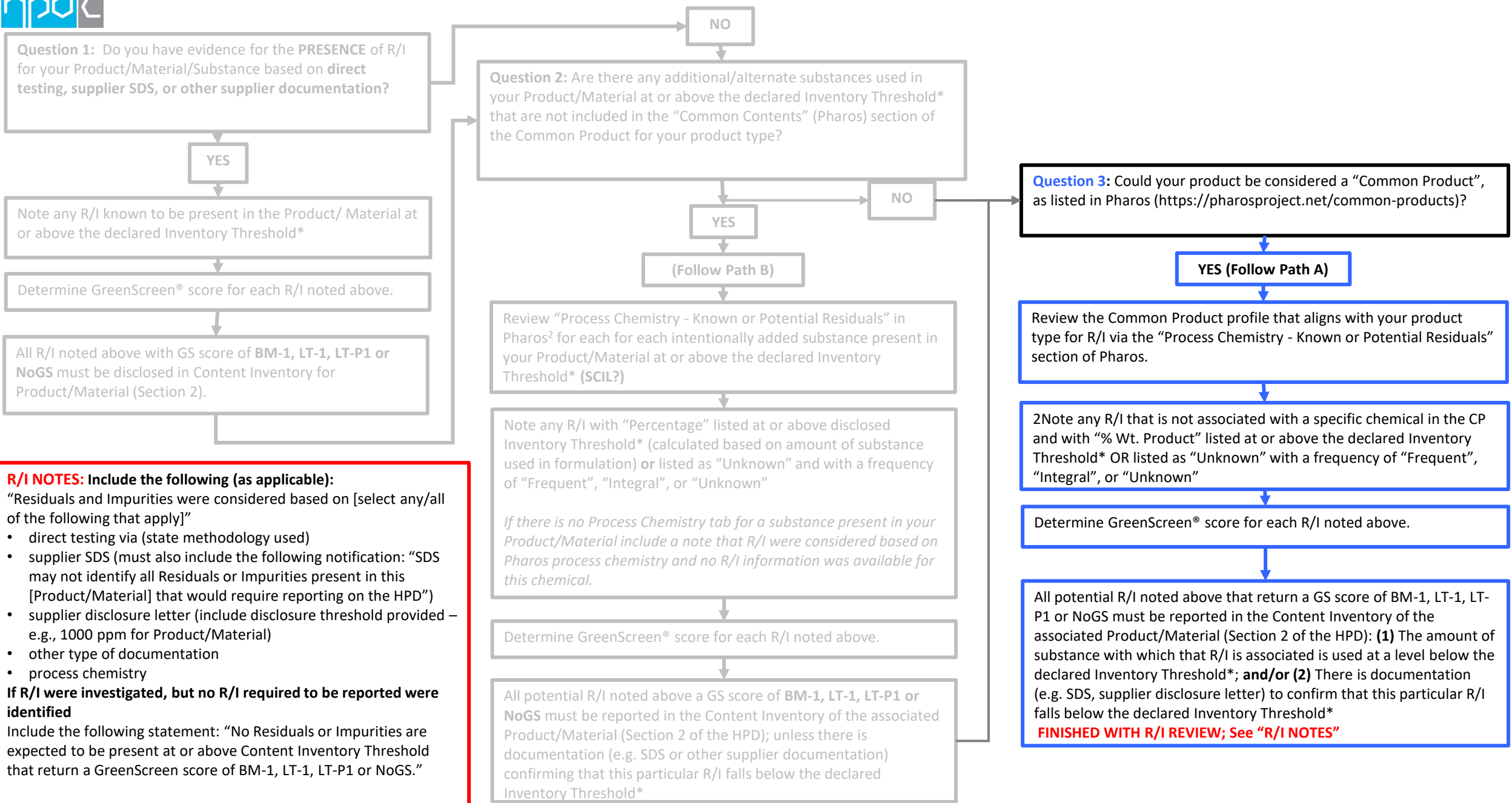
All potential R/I noted above a GS score of **BM-1, LT-1, LT-P1 or NoGS** must be reported in the Content Inventory of the associated Product/Material (Section 2 of the HPD); unless there is documentation (e.g. SDS or other supplier documentation) confirming that this particular R/I falls below the declared Inventory Threshold*

NO

Question 3: Could your product be considered a “Common Product”, as listed in Pharos (<https://pharosproject.net/common-products>)?



RESIDUALS AND IMPURITIES (R/I) – BEST PRACTICES



R/I NOTES: Include the following (as applicable):
 "Residuals and Impurities were considered based on [select any/all of the following that apply]"

- direct testing via (state methodology used)
- supplier SDS (must also include the following notification: "SDS may not identify all Residuals or Impurities present in this [Product/Material] that would require reporting on the HPD")
- supplier disclosure letter (include disclosure threshold provided – e.g., 1000 ppm for Product/Material)
- other type of documentation
- process chemistry

If R/I were investigated, but no R/I required to be reported were identified
 Include the following statement: "No Residuals or Impurities are expected to be present at or above Content Inventory Threshold that return a GreenScreen score of BM-1, LT-1, LT-P1 or NoGS."

Question 3: Could your product be considered a "Common Product", as listed in Pharos (https://pharosproject.net/common-products)?

YES (Follow Path A)

Review the Common Product profile that aligns with your product type for R/I via the "Process Chemistry - Known or Potential Residuals" section of Pharos.

2Note any R/I that is not associated with a specific chemical in the CP and with "% Wt. Product" listed at or above the declared Inventory Threshold* OR listed as "Unknown" with a frequency of "Frequent", "Integral", or "Unknown"

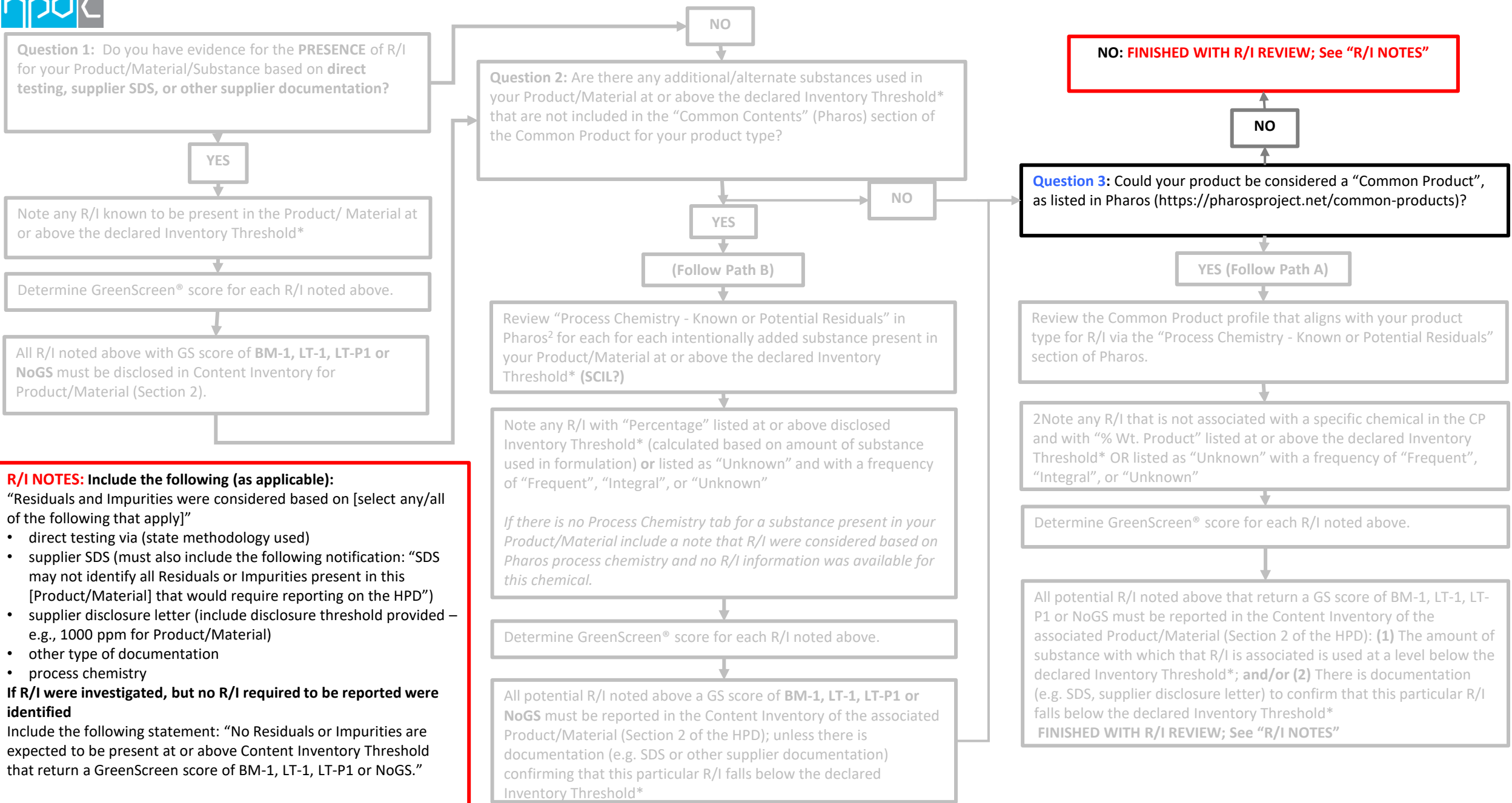
Determine GreenScreen® score for each R/I noted above.

All potential R/I noted above that return a GS score of BM-1, LT-1, LT-P1 or NoGS must be reported in the Content Inventory of the associated Product/Material (Section 2 of the HPD): (1) The amount of substance with which that R/I is associated is used at a level below the declared Inventory Threshold*; and/or (2) There is documentation (e.g. SDS, supplier disclosure letter) to confirm that this particular R/I falls below the declared Inventory Threshold*

FINISHED WITH R/I REVIEW; See "R/I NOTES"



RESIDUALS AND IMPURITIES (R/I) – BEST PRACTICES



R/I NOTES: Include the following (as applicable):
 “Residuals and Impurities were considered based on [select any/all of the following that apply]”

- direct testing via (state methodology used)
- supplier SDS (must also include the following notification: “SDS may not identify all Residuals or Impurities present in this [Product/Material] that would require reporting on the HPD”)
- supplier disclosure letter (include disclosure threshold provided – e.g., 1000 ppm for Product/Material)
- other type of documentation
- process chemistry

If R/I were investigated, but no R/I required to be reported were identified
 Include the following statement: “No Residuals or Impurities are expected to be present at or above Content Inventory Threshold that return a GreenScreen score of BM-1, LT-1, LT-P1 or NoGS.”



RESIDUALS AND IMPURITIES (R/I) – BEST PRACTICES

Question 1: Do you have evidence for the **PRESENCE** of R/I for your Product/Material/Substance based on **direct testing, supplier SDS, or other supplier documentation?**

YES

Note any R/I known to be present in the Product/ Material at or above the declared Inventory Threshold*

Determine GreenScreen® score for each R/I noted above.

All R/I noted above with GS score of **BM-1, LT-1, LT-P1 or NoGS** must be disclosed in Content Inventory for Product/Material (Section 2).

R/I NOTES: Include the following (as applicable):
“Residuals and Impurities were considered based on [select any/all of the following that apply]”

- direct testing via (state methodology used)
- supplier SDS (must also include the following notification: “SDS may not identify all Residuals or Impurities present in this [Product/Material] that would require reporting on the HPD”)
- supplier disclosure letter (include disclosure threshold provided – e.g., 1000 ppm for Product/Material)
- other type of documentation
- process chemistry

If R/I were investigated, but no R/I required to be reported were identified
Include the following statement: “No Residuals or Impurities are expected to be present at or above Content Inventory Threshold that return a GreenScreen score of BM-1, LT-1, LT-P1 or NoGS.”

NO

Question 2: Are there any additional/alternate substances used in your Product/Material at or above the declared Inventory Threshold* that are not included in the “Common Contents” (Pharos) section of the Common Product for your product type?

YES

(Follow Path B)

Review “Process Chemistry - Known or Potential Residuals” in Pharos² for each for each intentionally added substance present in your Product/Material at or above the declared Inventory Threshold* **(SCIL?)**

Note any R/I with “Percentage” listed at or above disclosed Inventory Threshold* (calculated based on amount of substance used in formulation) **or** listed as “Unknown” and with a frequency of “Frequent”, “Integral”, or “Unknown”

If there is no Process Chemistry tab for a substance present in your Product/Material include a note that R/I were considered based on Pharos process chemistry and no R/I information was available for this chemical.

Determine GreenScreen® score for each R/I noted above.

All potential R/I noted above a GS score of **BM-1, LT-1, LT-P1 or NoGS** must be reported in the Content Inventory of the associated Product/Material (Section 2 of the HPD); unless there is documentation (e.g. SDS or other supplier documentation) confirming that this particular R/I falls below the declared Inventory Threshold*

NO

Question 3: Could your product be considered a “Common Product”, as listed in Pharos (<https://pharosproject.net/common-products>)?

YES (Follow Path A)

Review the Common Product profile that aligns with your product type for R/I via the “Process Chemistry - Known or Potential Residuals” section of Pharos.

2Note any R/I that is not associated with a specific chemical in the CP and with “% Wt. Product” listed at or above the declared Inventory Threshold* **OR** listed as “Unknown” with a frequency of “Frequent”, “Integral”, or “Unknown”

Determine GreenScreen® score for each R/I noted above.

All potential R/I noted above that return a GS score of **BM-1, LT-1, LT-P1 or NoGS** must be reported in the Content Inventory of the associated Product/Material (Section 2 of the HPD): **(1)** The amount of substance with which that R/I is associated is used at a level below the declared Inventory Threshold*; **and/or (2)** There is documentation (e.g. SDS, supplier disclosure letter) to confirm that this particular R/I falls below the declared Inventory Threshold*
FINISHED WITH R/I REVIEW; See “R/I NOTES”

NO

NO: FINISHED WITH R/I REVIEW; See “R/I NOTES”